

500 €

Occupational  
Surface : 70 m<sup>2</sup>

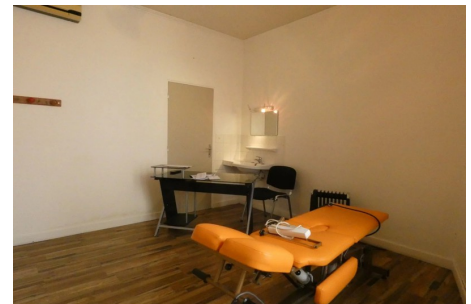
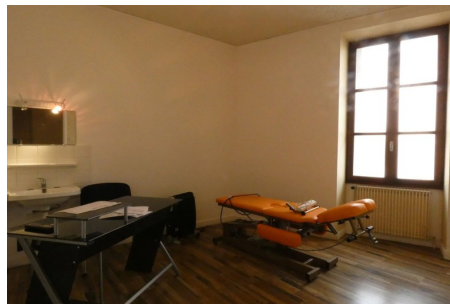
Features :  
Air conditionné, intercom



3112 Le Teil

ROCHEMAURE, ideally located, commercial premises (formerly osteopaths), with an area of 70 m<sup>2</sup> including a customer reception room of 7.60 m<sup>2</sup>, plus an office including a 20 m<sup>2</sup> terrace, a room of 11 m<sup>2</sup>, an office of 16 m<sup>2</sup> and a consultation room of 15 m<sup>2</sup>. Heating: individual electric. Property tax payable by the tenant

Document non contractuel  
26/04/2024 - Prix T.T.C



VINENT IMMOBILIER - 8 Place Emile Loubet - 26200 Montélimar

Tél: 04.75.00.75.90 - agence-vinent@wanadoo.fr

Carte professionnelle n°N. CPI 2602 2015 000 001 944 - RCS 398 406 819 RCS de ROMANS

Code NAF 6831Z - SIRET 398 406 819 00019 - Garantie financière : TRANSACTION IMMOBILIERE SANS MANIEMENT DE FONDS délivrée par GFC

- police n° 1-11831-14-612-0 - Document non contractuel